



KEYSHOCK

Equipment Impact Alarm



KEYSHOCK is an invaluable, easy-to-use system that protects your equipment from abusive operators. The system activates when an impact exceeds a predetermined level, alerting management to abusive impacts and improper handling. Comprehensive software puts you in control by allowing management to set sensitivity parameters, program alarm preferences.

Features

- Alerts to vehicle impacts and abusive handling
- Absence of battery power does not reset alarm (only management can reset after alarm is initiated)
- Easy-to-install on any make or model vehicle
- Highly customizable alarms
- Must be re-initialized after impact by management

Problems Solved

Vehicle Damage: Alerts management to vehicle abuse

Operator Accountability: Provides management with operating reporting

Impact Accuracy: Impact levels can be predefined

**Lift Truck Safety
Management with
Comprehensive
product line for
numerous applications.**

*PowerFleet:
Creating a Culture of Safety*



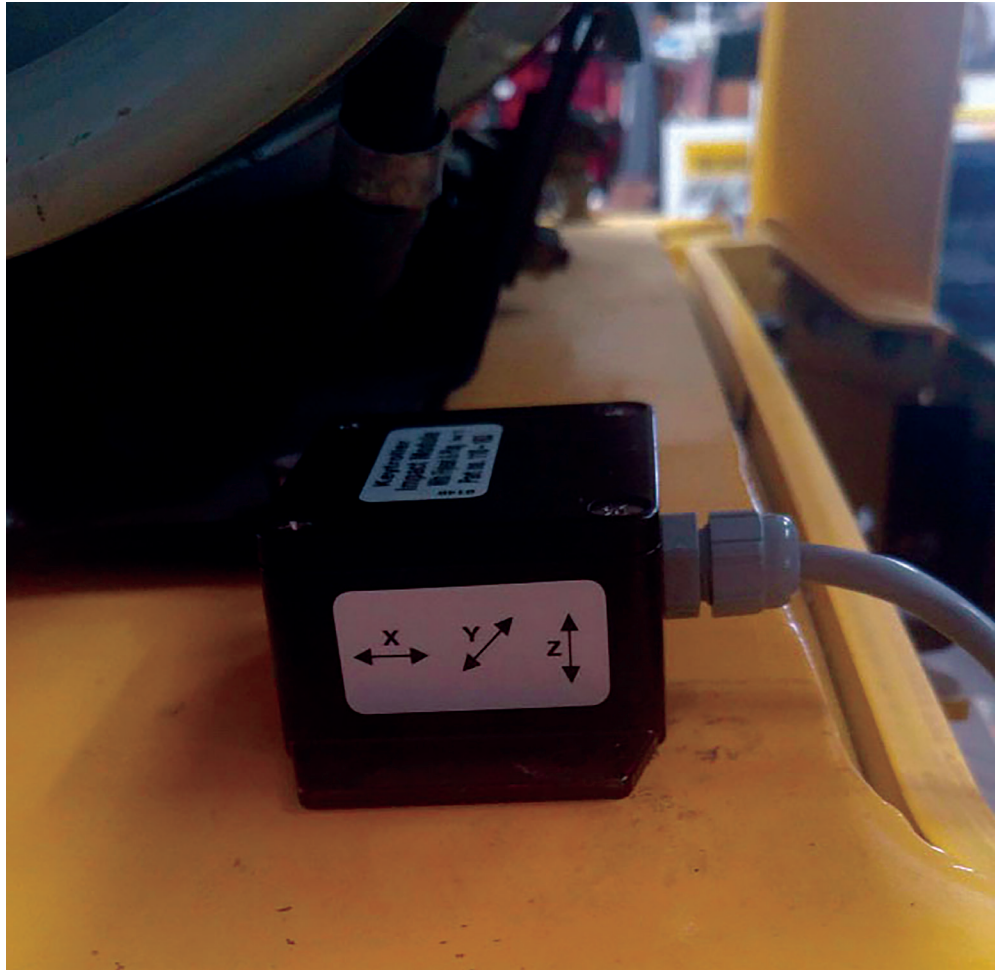


KEYSHOCK:

Simple impact
alerting solution

Easy to install
and use

Works on nearly
every machine
type



Specifications/Certifications

Programmed via USB connection on laptop (FREE software)

Password protected log in for settings.

Enable/disable any of X-Y-Z axis.

Set sensitivity for each axis independently.

Set "ignore" time for each axis (ms).

Set style for each output independently.

View current output of each axis (helpful in setting accurate threshold).

All specifications are subject to change for product improvement without notice. Other company or product names mentioned in this document may be trademarks or registered trademarks of their respective companies

© 2019 PowerFleet, Inc., All rights reserved.