



LV-550

Continuous Visibility

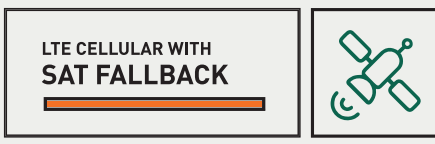
Unmatched coverage and service life.

Today's Fleet Operations Managers face increased pressure to maintain visibility over their fleet of assets such as trailers, containers, and chassis in order to improve utilization, increase security, and drive customer satisfaction. Powerfleet has developed the LV-550 to address the need for continuous coverage where there may be gaps in visibility due to rural spots, cross-border applications, or natural disasters and extreme weather.

The LV-550 is a reliable dual-mode communication tracking device platform that includes both LTE Cellular

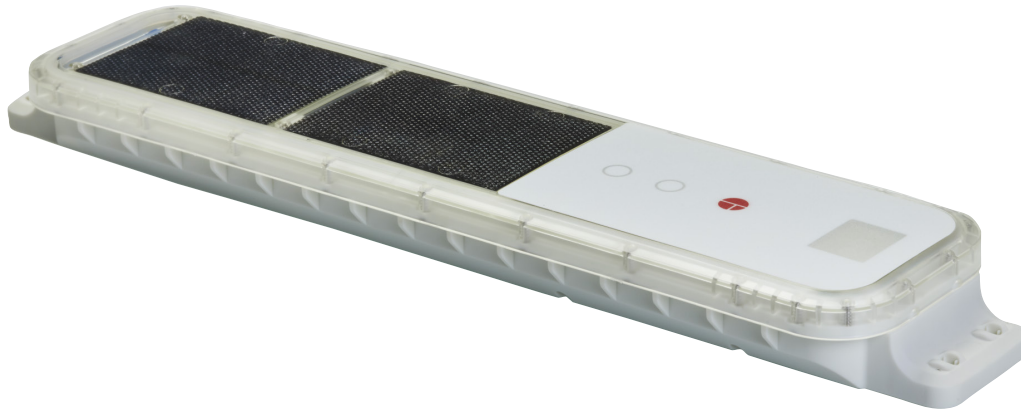
and Iridium® satellite technology. Iridium satellite communication provides complete coverage, with truly global communication, from pole to pole. The LV-550 provides users the ability to use cellular data as the primary communication mode, and use satellite communication as a backup to guarantee the transmission of critical data. The LV-550 is built upon the LV-500, a dual-powered device, featuring solar-powered supercapacitors (supercaps) and long-lasting primary batteries ensure unmatched service life and critical event visibility.

FEATURES



- Lithium primary batteries
- Wireless sensor integration
- In-transit GPS reporting
- Tamper detection and alerts
- 10-minute fully external install
- LED indicator lights for install verification
- Configurable and fully programmable

PROBLEMS SOLVED



RELIABLE VISIBILITY

Continuous coverage for high-value, time-sensitive cargo and increased security

FREIGHT STATUS

Imagery, environmental condition, cargo capacity

UTILIZATION

Identify underutilized assets and reduce dormancy

CAPACITY

Discover inefficiencies with loading and unloading of freight

VELOCITY

Improve productivity with faster turns

INFORMATION

More data for better decisions

Why Choose A Dual-Mode Cellular-Satellite Device?

Fleets can reduce the risk of network failure and coverage gaps by taking advantage of both the broad geographic coverage offered by satellites and high-volume, low-cost data transmission over cellular networks. Dual-mode connected solutions are ideal for fleets to address some of these challenges:

Coverage Gaps: Cellular coverage has made significant strides in the last decade however, there are still areas where it is patchy such as rural and mountainous areas. Without continuous connectivity, fleet operations managers can't react to issues in real-time.

Natural Disasters: Hurricanes, ice storms, tornadoes and other extreme weather conditions can take down cellular networks and in some cases it could take weeks to get them up and running again.

Network Congestion: In contrast to traveling in and out of rural areas, when assets move into heavily populated areas can create spikes and bandwidth issues in cellular networks, resulting in delayed transmissions or outages.

Customer Satisfaction: The relationship between shippers and carriers is growing more critical in the aftermath of COVID-19. Customers want improved transparency and reliable service. A dual-mode device ensures accurate reporting and timely notifications such as estimated arrival times, delays, load/unload status, and dwell times.

ASSETS SUPPORTED

Dry Vans, Containers, Tankers, Rental Assets, Heavy Equipment

SENSORS SUPPORTED

Freight Camera, Freight Tags, Door Sensor, TIS Monitor, ABS Monitor, Light Monitor