

# Solutions for Construction Dealers and Equipment Rental

Elevate Your Construction Dealership  
with Enhanced Operational Performance

## Overview

As a construction dealer, you play a pivotal role within this dynamic industry. This includes selling both new and used equipment, managing equipment rentals, as well as overseeing an expansive fleet of service and delivery vehicles dedicated to supporting your rental and sales operations.

Given the fast-paced nature of the construction business, you're under pressure to provide a differentiated offering and world-class customer service to stay competitive. If you don't, you are at risk of losing business and increasing your operational and capital expenses.

Effectively overseeing and maximising the potential of your diverse array of assets and vehicles poses a substantial set of challenges. These challenges become even more pronounced when confronted with various aspects such as staying on top of inventory and the location of rented equipment, monitoring utilisation, improving billing accuracy,

enabling theft recovery, and coordinating precise maintenance schedules.

Elevate your business beyond traditional equipment sales and rentals to secure a competitive edge, all while streamlining your operations through automation. By partnering with the right technology provider, you can effectively transform these challenges into opportunities for attaining distinction and achieving success.





## Solution at a Glance

Leverage Powerfleet Unity – the single pane of glass you need to obtain visibility into all customer equipment, regardless of OEM. The Powerfleet Unity platform gives you the real-time data you and your customers need – including insights into location, utilisation, maintenance, performance, and more.

Supported by a world-renowned services team with nearly 30 years' experience, increase ROI with a series of value-added capabilities. This includes:



### Safety and Security

- Real-time alerts, along with precise location data, actively monitor and identify potential theft incidents. Our emergency tracking capabilities enhance recovery chances and strengthen security.
- After-hours tracking ensures swift threat response, preserving asset integrity.



### Maintenance and Performance

- Understand equipment usage metrics, such as engine-hours and hydraulic system activation, to maintain optimal performance and make resource decisions.
- Usage-based maintenance replaces arbitrary schedules, reducing downtime, ensuring timely servicing, and maximising equipment longevity.
- Promptly recognise maintenance requirements by pinpointing diagnostic trouble codes.
- Real-time alerts prevent oversight and minimise wear on assets.



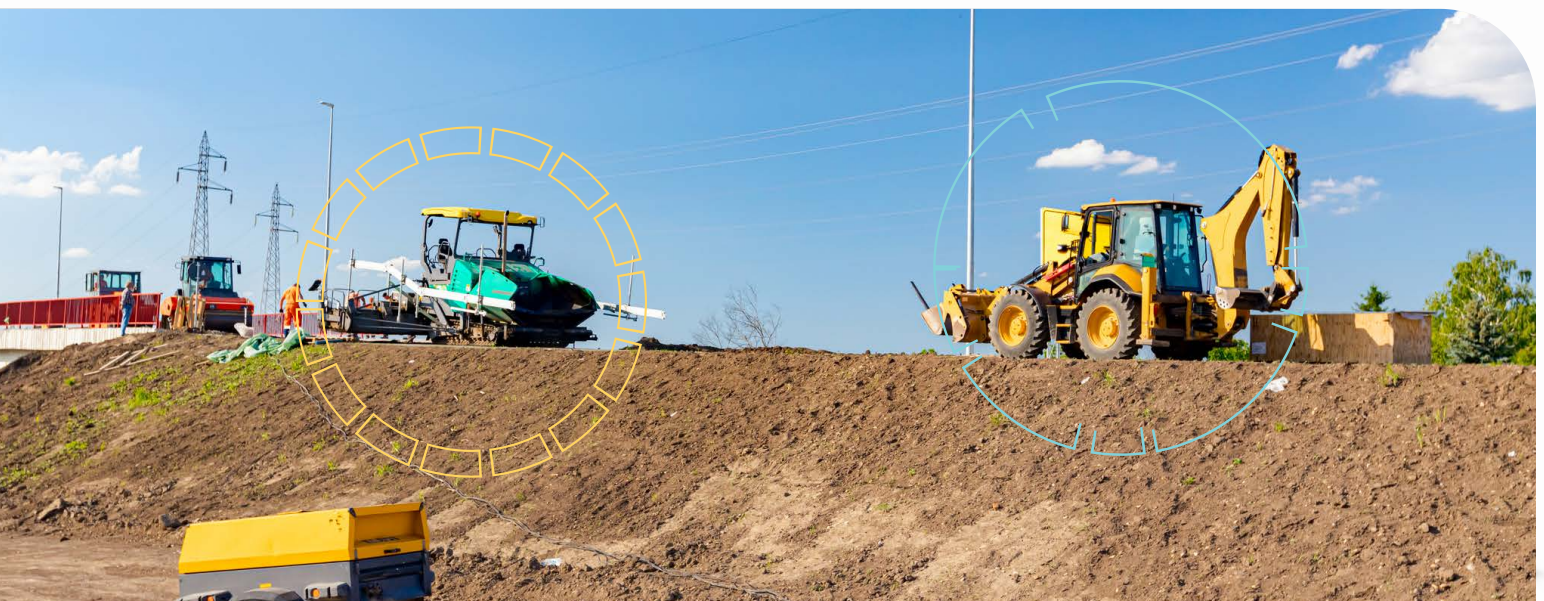
### Regulatory Management and Compliance

- EMP2.0 compatibility, ensuring seamless data exchange to power your compliance, maintenance planning, and visibility needs.



### Visibility and Resource Management

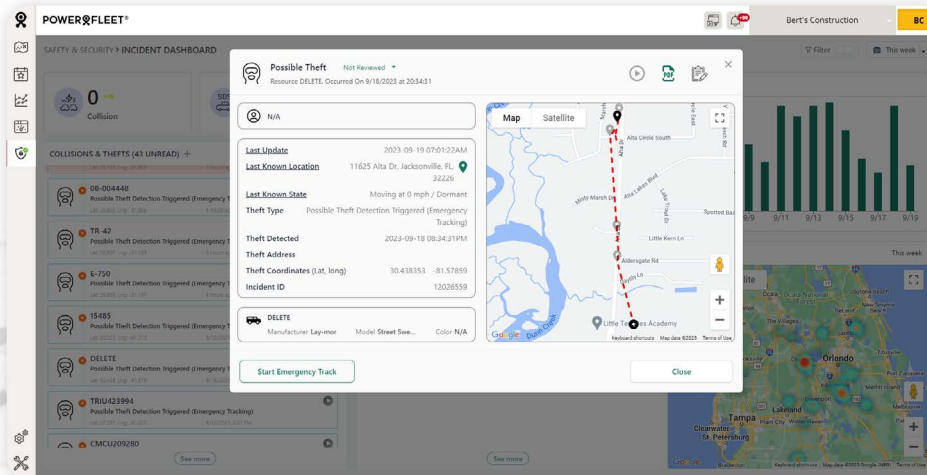
- Real-time asset visibility curbs losses from theft or misuse.
- Data-driven insights optimise equipment and resource allocation, boosting project efficiency.
- Engine-hours monitoring ensures that usage is precisely accounted for, allowing for accurate billing that fairly reflects the extent of utilisation, whether your objective is to set usage limits, manage service, or maximise the potential for resale.
- Agnostic solution empowers tailored asset selection, enhancing flexibility and effectiveness.



# Results

With Powerfleet, you have access to real-time, multi-dimensional KPIs tailored to your business. You're empowered with the insight to optimise operations today, while advocating for the future of your fleet.

- Improve security and theft recovery
- Optimise asset and vehicle utilisation
- Increase longevity of assets
- Shrink operating costs
- Enhance billing process
- Improve customer satisfaction
- Mitigate liability
- Reduce fuel costs
- Adhere to compliance standards
- Protect brand reputation



## Have Your Own Service Fleet?

With Powerfleet's SaaS-based fleet management solutions, which include best-in-class vehicle telematics and video, you can gain visibility into your fleets and assets to better manage utilisation and maintenance, driver behaviour, fuel management, and high-risk incidents – all in a single pane of glass. Our solutions are capable of ingesting, processing, and enriching live stream data from any of your IoT devices and business systems to provide multi-dimensional KPIs, manage driver safety, and customer satisfaction while reducing costs.

Powerfleet (NASDAQ: PWFL; TASE: PWFL) is a global leader of Internet of Things (IoT) software-as-a-service (SaaS) solutions that optimise the performance of mobile assets and resources to unify business operations. Our data science insights and advanced modular software solutions help drive digital transformation through our customers' and partners' ecosystems to help save lives, time, and money. We help connect companies, enabling customers and their customers to realise more effective strategies and results. Powerfleet's tenured and talented team is at the heart of our approach to partnership and tangible success. The company is headquartered in Woodcliff Lake, New Jersey, with our Pointer Innovation Centre (PIC) in Israel and field offices around the globe. For more information, please visit [www.powerfleet.com](http://www.powerfleet.com).